

InetDisable 3.0 - Internet Access Scheduler

Introduction

InetDisable is an Internet access scheduler that lets you specify, for each day of the week, the periods throughout the day during which Internet access is enabled or disabled.

InetDisable consists of two primary units:

- 1) The administrator interface program (*InetDisable Admin*) which allows you to define and update the Internet access schedule.
- 2) The Internet monitor task, a background task which disables internet access at the times specified in the schedule.

As administrator, you have password protected access to the *InetDisable Admin* program from the Windows Start menu. The administration program allows you to define and update the schedule for which Internet access is enabled and disabled for the computer. From the administration program, you can also change the administrator's password, and start/stop the Internet monitor task to allow Internet access during disabled periods.

Hardware / Software Requirements

InetDisable is designed to operate under Windows 95/98/ME as well as Windows NT/2000/XP. It works with most dial-up, DSL, cable and network Internet connections. Please note the following considerations:

If your Internet access is through a local area network:

For Internet access through a local area network, *InetDisable* disables access by terminating the IP address lease. This implies that if TCP/IP is the *only* networking protocol used on your network, then all network communication is disabled for the computer running *InetDisable*. However, it is not uncommon to have network protocols in addition to TCP/IP installed on your network (such as NetBEUI and IPX/SPX). In this case, all computers on the network can still communicate with each other for file sharing, printer sharing, etc., even when TCP/IP access is disabled. In fact, ensuring that TCP/IP has no bindings to any network service on your computer at any time is a good security measure as it prevents TCP/IP traffic from the Internet from having access to the shared files and resources on your network.

If you use a Firewall:

If you are using a firewall, then you may get an alert from your firewall shortly after you first enable *InetDisable*'s monitor task (or shortly after you first connect to the Internet if you are using a dial-up modem). Your firewall may

indicate that an unauthorized program is attempting outbound communication over the Internet. The "culprit" is *InetDisable*'s monitor task attempting to retrieve time from a time server on the Internet. *In order for InetDisable to work, you must grant permission for the monitor program to communicate through the firewall.* The name of the monitor task is not given here (it would give the kids some ammunition to try and crack the program!). However if your firewall is going to trap *InetDisable*'s communication, it will do so very soon after you first enable *InetDisable*'s monitor task (if using a DSL or cable modem), or very shortly after you first connect to the Internet (if using a dial-up modem). The program name presented by your firewall will seem totally unrelated to "InetDisable," however, the program is the *InetDisable* monitor task and it must be granted permission to communicate over the Internet.

Special Considerations for Windows NT/2000/XP Users:

The enhanced security environment of Windows NT/2000/XP can affect the operation of *InetDisable* based on user account types:

Windows Account Type	InetDisable Operation
Full Privilege (default for Windows XP)	Normal
Limited Privilege (with dial-up Internet Access)	<i>InetDisable</i> cannot set or correct the system time. However, since the user cannot change the system time either, this is generally not an issue.
Limited Privilege (with DSL, cable, or network Internet access)	<i>InetDisable</i> cannot set or correct the system time (see previous item). <i>InetDisable</i> cannot disable Internet access as it does not have sufficient privilege to disable network activity.

In short, *InetDisable* runs as a user task and therefore inherits the privileges of the user account which started it. Further, *InetDisable* does not use "hooks" into the operating system for TCP/IP packet inspection or interception. This makes *InetDisable* a very low overhead and "safe" utility. However, since it is not run as a device driver or service application, *InetDisable* is limited by the privileges of the user's account. Future versions of *InetDisable* may execute as a service application to allow full control of Internet access even from limited privilege user accounts.

InetDisable 3.0 - Quick Start

Step 1 – Run the Administration Program

After running the installation program, run *InetDisable Admin* from the Windows Start menu. When prompted, enter the password. The password on first startup is: **default**. At this point, it is recommended that you create your own password. In the **Enter New Password** field, key in a new password (4 to 15 characters, case sensitive) and click **OK**. *Be sure to remember your password!* Without the password, you do not have access to the administration program *and cannot uninstall the software* (an unregistered copy *can* be removed without a password after the trial period has expired).

Step 2 – Specify Your Time Zone

Since *InetDisable* keeps the computer's time and date in sync with a national time standard (in case the user tries to bypass the Internet schedule by changing the computer's time), *InetDisable* must know what time zone you are in. Choose the most appropriate time zone / city combination for your locale from the **Select Time Zone** drop-down box.

Step 3 – Define the Internet Access Schedule

The Internet access schedule is defined as a series of “enable” and “disable” commands. These are entered in the **Edit Internet Access Schedule** section of the administration program. Each “enable” and “disable” command is listed in time order within the **Internet Access Schedule** window. Next to the schedule is a graphical representation of the schedule. On the chart, green indicates periods when Internet access is enabled, and red indicates periods when Internet access is disabled.

Repeat the following steps as necessary to add commands to the schedule:

- 1) Under **Day**, select the day of the week for which you want to enter an enable or disable command, or select **Daily** to have the command repeated every day of the week.
- 2) Under **Time**, set the time at which you wish to enable or disable the Internet. You can key in the hour and minute, or use the up/down arrow buttons to adjust the time. (The hour, minute and AM/PM are each adjusted independently.)
- 3) Under **Action to Perform**, select **Enable** or **Disable Internet Access**.
- 4) Click the **Add Action Shown Above** button to add the command you just created to the schedule.

For example, to disable Internet access every day at 9:00 PM and re-enable every morning at 6:00 AM, follow these steps:

Under **Day**, select **Daily**. Under **Time**, key in or adjust the time to read “9:00 PM.” Finally, select **Disable Internet Access** and click the **Add Action Shown Above** button. (Note: At this point, the Internet is disabled at all times since we have not yet added any “enable” commands.)

To enter the enable commands, change the time to “6:00 AM,” select **Enable Internet Access** and click the **Add Action Shown Above** button. The schedule chart shows green (Internet enabled) between 6:00 AM and 9:00 PM each day, and red (Internet disabled) elsewhere.

Step 4 – Save Changes and Exit

Save the changes you made by clicking the **Save** button. Before exiting, make sure the Internet Monitor Task is running by checking its status at the bottom of the administration screen. The monitor must be running in order to enforce the schedule you defined. Exit the administration program by clicking the **Exit** button.

That's It!

Unless you want to change the Internet access schedule you defined, no further actions are required. The Monitor Task is started automatically whenever the computer is turned on and will enforce the schedule you defined.

Notes: The monitor task runs every 30 seconds or so. Therefore, Internet enable/disable times are approximate. Also, even when Internet access is disabled, cached pages may still be available in the browser, however, no new communication can take place.

InetDisable 3.0 - Advanced Operation

Over-Riding Schedule Settings

If you want to enable Internet access during a time period in which it is normally disabled, simply run the administration program and shut down the Monitor Task. The current state of the Monitor Task is displayed near the bottom of the administration screen. If the monitor is running, click **Stop Monitor** to shut down the Monitor Task. While the Monitor Task is shut down, the computer has full and normal Internet access.

The Internet Monitor will be restarted next time the computer is booted, or, you can manually start it again from the administration program.

Modifying the Access Schedule

The *InetDisable* Administrator program allows you to add, change, or delete schedule items as needed.

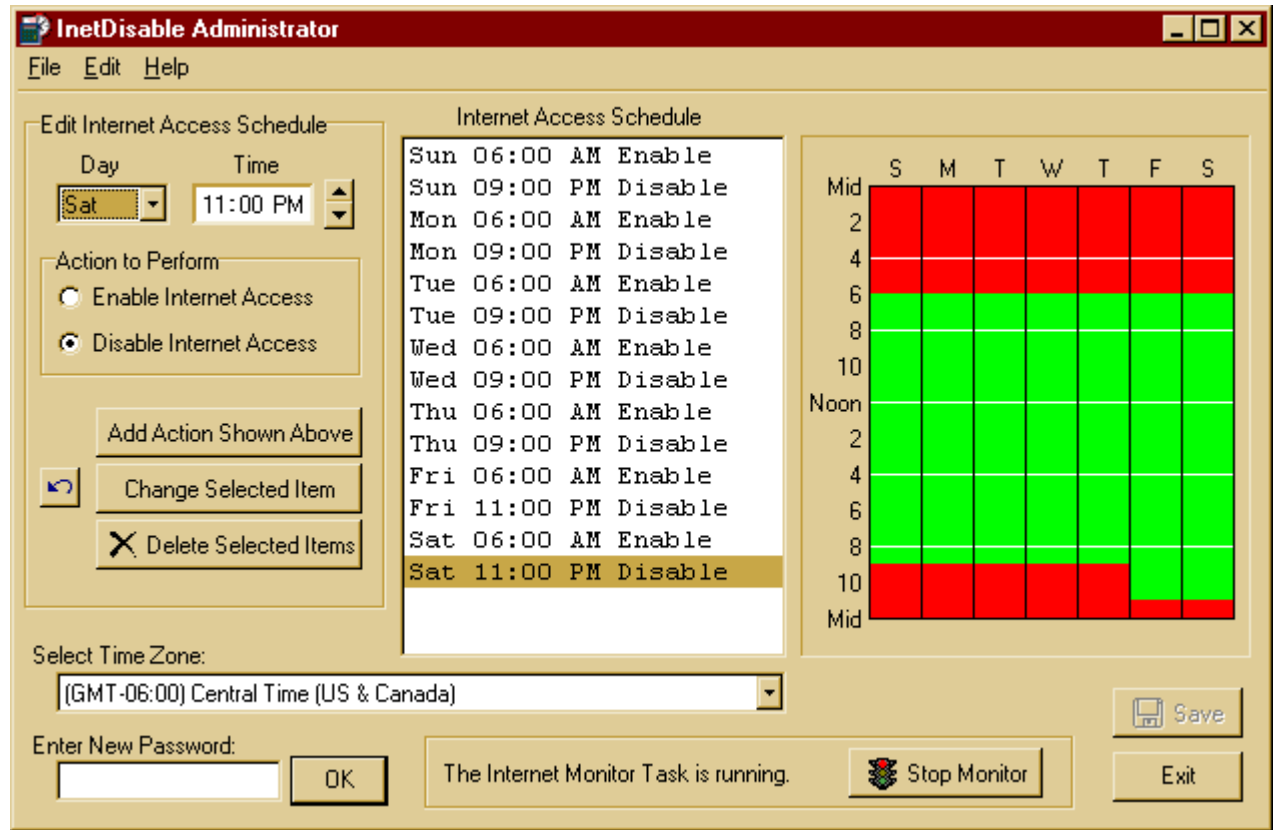
To **add** a command, follow the procedure outlined in step 3 of the “Quick Start” section.

To **change** a command, highlight a single command in the schedule, or, click near the day/time combination you wish to change on the colored chart – the corresponding command in the schedule list will automatically be selected. Adjust the day and/or time as needed and click the **Change Selected Item** button.

As you add and change commands, old commands may need to be removed. To remove schedule entries, select them on the schedule and click the **Delete Selected Item(s)** button. Note: You can shift-click or ctrl-click to select multiple adjoining or disjoint items.

Removing InetDisable from Your Computer

Select the **Uninstall InetDisable** option from the within the InetDisable program group in the Windows Start menu, or run the Windows Add/Remove Programs control panel. Select **InetDisable** from the list of programs that can be removed, and then click the **Add/Remove...** button.



In order to remove *InetDisable* from your computer, you will be prompted for administrator’s password. Because of this, **be sure to choose a password you won’t forget!** (An unregistered copy **can** be removed without a password after the trial period has expired.)

Questions / Support

Web: <http://DeRamp.com>
Email: DeRamp@farmtek-fti.com
Phone: (800) 755-6529 ext. 1210

© 2002 DeRamp Software